

# InSAR data of 2004-2006 unrest at Campi Flegrei (Italy)

Elisa Trasatti

**Abstract**—This Research Object contains the InSAR data (EN-VISAT ascending and descending orbits) at Campi Flegrei during 2004-2006. The dataset was processed with SBAS and is subsampled with step 100m-150m. Ascii file and png images are stored.

## I. INTRODUCTION

This document provides a paper-style view of the Research Object (RO) “InSAR data of 2004-2006 unrest at Campi Flegrei (Italy)”<sup>1</sup> generated. The RO has been created, managed and preserved via ROHub platform [1]. Please refer to [2] for a general introduction to the RO concept, to [3] for a detailed description of the RO model, and to [4] for more information about ROHub platform.

The RO is of type “Data-centric”, which represents an aggregation of related resources where data resources (e.g., datasets, documents, files) play the central role.<sup>2</sup>

An overview of this RO is depicted in Figure 1. Additionally, this RO has been enriched automatically with the following annotations:

- concepts (most frequently mentioned in the RO): *file, Ascii, unrest*
- domains (fields of knowledge in which the main concepts are commonly used): *memory*
- frequent expressions (most frequently mentioned noun phrases): *InSAR data, descending orbit*
- named entities (most frequently mentioned):
  - Places: *Italy*

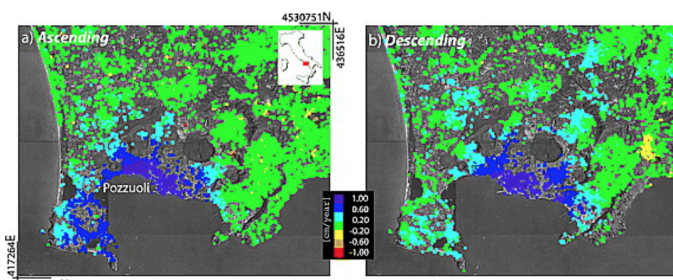


Fig. 1. Research Object Sketch

## II. RESOURCES

The resources encapsulated by the RO are summarized in table I

<sup>1</sup>[http://sandbox.rohub.org/rod/ROs/InSAR\\_Campi\\_Flegrei\\_2004\\_2006/](http://sandbox.rohub.org/rod/ROs/InSAR_Campi_Flegrei_2004_2006/)

<sup>2</sup>See RO types definitions at <http://w3id.org/ro/earth-science#>

TABLE I  
RESEARCH OBJECT RESOURCES

name	size	type
ASC_DSC.png	989.4 KB	Sketch
Method.rtf	1.5 KB	Document
ASC-DSC-disp.rtf	645.0 B	File
SAR_RESULTS_ASC_SAR_RESULTS_OBS_col.png	4.1 KB	Image
SAR_RESULTS_ASC_SAR_RESULTS_OBS_col.pngw	81.0 B	Image
SAR_RESULTS_DSC_SAR_RESULTS_OBS_col.png	4.0 KB	Image
SAR_RESULTS_DSC_SAR_RESULTS_OBS_col.pngw	81.0 B	Image

## ACKNOWLEDGMENT

The Research Object was uploaded to ROHub by *Elisa Trasatti*. ROHub portal development was supported by EVER-EST EU project (HORIZON 2020 grant 674907).

## REFERENCES

- [1] The Research Object Management Platform - ROHub <http://www.rohub.org/>.
- [2] K. Belhajjame, O. Corcho, D. Garijo, J. Zhao, P. Missier, D. Newman, R. Palma, S. Bechhofer, E. García Cuesta, J. M. Gómez-Pérez, S. Soiland-Reyes, L. Verdes-Montenegro, D. De Roure, and C. Goble “Workflow-Centric Research Objects: First Class Citizens in Scholarly Discourse”, Proceedings of Workshop on the Semantic Publishing, SePublica Crete, Greece 28 May 2012.
- [3] Belhajjame K., Zhao J., Garijo D., Gamble M., Hettne K., Palma R., Mina E., Corcho O., Gómez-Pérez J. M., Bechhofer S., Klyne G., Goble C. “Using a suite of ontologies for preserving workflow-centric research objects”, Journal of Web Semantics: Science, Services and Agents on the World Wide Web Available online 11 February 2015 ISSN 1570-8268.
- [4] Palma R., Corcho O., Gómez-Pérez J. M., Mazurek, C. “ROHub - A Digital Library of Research Objects Supporting Scientists Towards Reproducible Science”. In Semantic Publishing Challenge of Proc. Extended Semantic Web Conference (ESWC) Crete, Greece 25-29 May 2014