

# VSM Taverna Application to 1993-97 InSAR and GPS data at Mt Etna

Elisa Trasatti

## Abstract—

Please refer to the following RO for details about VSM code.

[http://www.rohub.org/portal/ro?ro=http://sandbox.rohub.org/rodl/RO/1997InSARandGPSdataatMtEtna\(Italy\)duetotheactionofadee](http://www.rohub.org/portal/ro?ro=http://sandbox.rohub.org/rodl/RO/1997InSARandGPSdataatMtEtna(Italy)duetotheactionofadee)

Please refer to the following RO for details about VSM code.

<http://www.rohub.org/portal/ro?ro=http://sandbox.rohub.org/rodl/RO/>

**Index Terms**— volcanic source; geodetic data; Mt Etna; Interferometry

## I. INTRODUCTION

This document provides a paper-style view of the Research Object (RO) “VSM Taverna Application to 1993-97 InSAR and GPS data at Mt Etna”<sup>1</sup>, which is a *release* generated on 05 September 2017 from the live RO “VSM Taverna Application to 1993-97 InSAR and GPS data at Mt Etna”<sup>2</sup>. The ROs have been created, managed and preserved via ROHub platform [1]. Please refer to [2] for a general introduction to the RO concept, to [3] for a detailed description of the RO model, and to [4] for more information about ROHub platform.

The RO is of type “Basic”, which represents a general aggregation of related resources.<sup>3</sup>

An overview of this RO is depicted in Figure 1. Additionally, this RO has been enriched automatically with the following annotations:

- concepts (most frequently mentioned in the RO): *RO, Mt Etna*
- domains (fields of knowledge in which the main concepts are commonly used): *telecommunications*
- frequent expressions (most frequently mentioned noun phrases): *magmatic source, GPS data*
- named entities (most frequently mentioned):
  - Places: *Etna*

## II. RESOURCES

The resources encapsulated by the RO are summarized in table I

## ACKNOWLEDGMENT

The Research Object was uploaded to ROHub by *Elisa Trasatti*. ROHub portal development was supported by EVEREST EU project (HORIZON 2020 grant 674907).

<sup>1</sup>[http://sandbox.rohub.org/rodl/ROs/VSM\\_TAV\\_Etna\\_1993\\_97-release/](http://sandbox.rohub.org/rodl/ROs/VSM_TAV_Etna_1993_97-release/)

<sup>2</sup>[http://sandbox.rohub.org/rodl/ROs/VSM\\_TAV\\_Etna\\_1993\\_97/](http://sandbox.rohub.org/rodl/ROs/VSM_TAV_Etna_1993_97/)

<sup>3</sup>See RO types definitions at <http://w3id.org/ro/earth-science#>

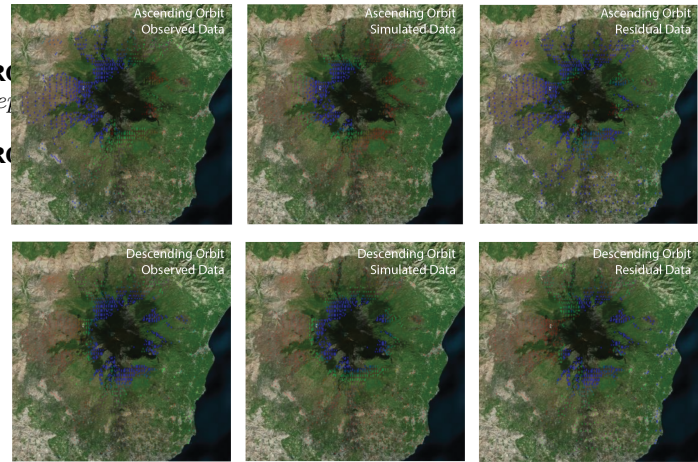


Fig. 1. Research Object Sketch

TABLE I  
RESEARCH OBJECT RESOURCES

| name   | size     |
|--|----------|
| VSM_TAV_Etna_1993_97-ETNA_1993_97_VSM_sphere.bundle                    | 4.0 KB   |
| ETNA_1993_97_input.zip   | 26.5 KB  |
| create_output_zip-1298d3fdcfcc70d68f254a10144078cf4b15b21c.txt         | 127.0 B  |
| VSM_global.t2flow  | 118.1 KB |
| create_input_zip-3448c523cf726276221ce994edbee455c956347e.txt          | 126.0 B  |
| results.png  | 3.6 MB   |
| create_exe_file-d2220dadf7bf95f70f7c9b2fe8cf07b875ffa9e4.txt           | 120.0 B  |
| create_python_script_file-53d32995200b84839c4c212791088620487e7271.txt | 126.0 B  |
| Workflow7-9361982c-9823-450d-a203-a593d01932af.wfbundle                | 23.8 KB  |
| create_input_dir-ffc6b4e80ed41881b164b7d9f8664272e89d7529.txt          | 120.0 B  |
| create_output_dir-db0552020ca7b73312da439b985bc75581ef4f41.txt         | 122.0 B  |
| Workflow1.wfbundle   | 23.7 KB  |
| VSM-output4220827433056891746.zip                                      | 892.6 KB |

## REFERENCES

- [1] The Research Object Management Platform - ROHub <http://www.rohub.org/>.
- [2] K. Belhajjame, O. Corcho, D. Garijo, J. Zhao, P. Missier, D. Newman, R. Palma, S. Bechhofer, E. García Cuesta, J. M. Gómez-Pérez, S. Soiland-Reyes, L. Verdes-Montenegro, D. De Roure, and C. Goble “Workflow-Centric Research Objects: First Class Citizens in Scholarly Discourse”, Proceedings of Workshop on the Semantic Publishing, SePublica Crete, Greece 28 May 2012.
- [3] Belhajjame K., Zhao J., Garijo D., Gamble M., Hettne K., Palma R., Mina E., Corcho O., Gómez-Pérez J. M., Bechhofer S., Klyne G., Goble C. “Using a suite of ontologies for preserving workflow-centric research objects”, Journal of Web Semantics: Science, Services and Agents on the World Wide Web Available online 11 February 2015 ISSN 1570-8268.

- [4] Palma R., Corcho O., Gómez-Pérez J. M., Mazurek, C. "ROHub - A Digital Library of Research Objects Supporting Scientists Towards Reproducible Science". In Semantic Publishing Challenge of Proc. Extended Semantic Web Conference (ESWC) Crete, Greece 25-29 May 2014