

VSM Taverna Application to 1993-97 InSAR and GPS data at Mt Etna

Elisa Trasatti

Abstract—

Please refer to the following RO for details about VSM code.
[http://www.rohub.org/portal/ro?ro=http://sandbox.rohub.org/rodl/RO/1997InSARandGPSdataatMtEtna\(Italy\)duetotheactionofadee](http://www.rohub.org/portal/ro?ro=http://sandbox.rohub.org/rodl/RO/1997InSARandGPSdataatMtEtna(Italy)duetotheactionofadee)

Please refer to the following RO for details about VSM code.
<http://www.rohub.org/portal/ro?ro=http://sandbox.rohub.org/rodl/RO/>

Index Terms— volcanic source; inversion methods; geodetic data; Mt Etna; Interferometry

I. INTRODUCTION

This document provides a paper-style view of the Research Object (RO) “VSM Taverna Application to 1993-97 InSAR and GPS data at Mt Etna”¹ generated. The RO has been created, managed and preserved via ROHub platform [1]. Please refer to [2] for a general introduction to the RO concept, to [3] for a detailed description of the RO model, and to [4] for more information about ROHub platform.

The RO is of type “Basic”, which represents a general aggregation of related resources.²

An overview of this RO is depicted in Figure 1. Additionally, this RO has been enriched automatically with the following annotations:

- concepts (most frequently mentioned in the RO): *Mt Etna*, *RO*
- domains (fields of knowledge in which the main concepts are commonly used): *telecommunications*
- frequent expressions (most frequently mentioned noun phrases): *magmatic source*, *GPS data*
- named entities (most frequently mentioned):
 - Places: *Etna*

II. RESOURCES

The resources encapsulated by the RO are summarized in table I

ACKNOWLEDGMENT

The Research Object was uploaded to ROHub by *Elisa Trasatti*. ROHub portal development was supported by EVEREST EU project (HORIZON 2020 grant 674907).

¹http://sandbox.rohub.org/rodl/ROs/VSM_TAV_Etna_1993_97/

²See RO types definitions at <http://w3id.org/ro/earth-science#>

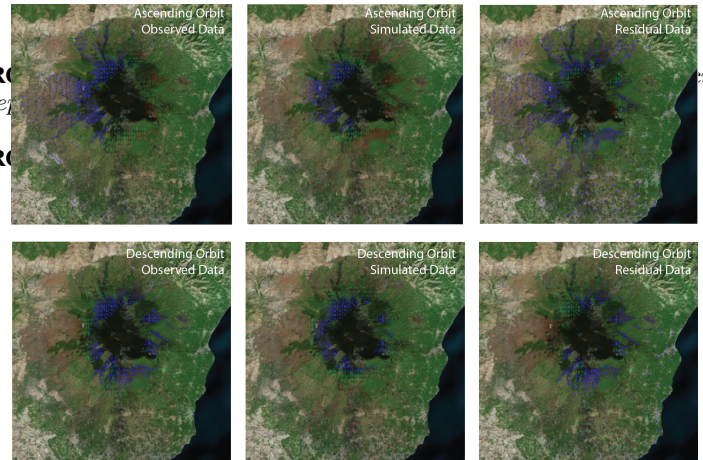


Fig. 1. Research Object Sketch

TABLE I
RESEARCH OBJECT RESOURCES

name	size
VSM_global.t2flow	118.1 KB
Workflow1.wfbundle	23.7 KB
Workflow7-9361982c-9823-450d-a203-a593d01932af.wfbundle	23.8 KB
create_exe_file-d2220dadf7bf95f70f7c9b2fe8cf07b875ffa9e4.txt	120.0 B
create_input_dir-ffc6b4e80ed41881b164b7d9f8664272e89d7529.txt	120.0 B
create_input_zip-3448c523cf726276221ce994edbee455c956347e.txt	126.0 B
create_output_dir-db0552020ca7b73312da439b985bc75581ef4f41.txt	122.0 B
create_output_zip-1298d3fdcfcc70d68f254a10144078cf4b15b21c.txt	127.0 B
create_python_script_file-53d32995200b84839c4c212791088620487e7271.txt	126.0 B
ETNA_1993_97_input.zip	26.5 KB
VSM_TAV_Etna_1993_97-ETNA_1993_97_VSM_sphere.bundle	4.0 KB
VSM-output4220827433056891746.zip	892.6 KB
results.png	3.6 MB

REFERENCES

- [1] The Research Object Management Platform - ROHub <http://www.rohub.org/>.
- [2] K. Belhajjame, O. Corcho, D. Garijo, J. Zhao, P. Missier, D. Newman, R. Palma, S. Bechhofer, E. García Cuesta, J. M. Gómez-Pérez, S. Soiland-Reyes, L. Verdes-Montenegro, D. De Roure, and C. Goble “Workflow-Centric Research Objects: First Class Citizens in Scholarly Discourse”, Proceedings of Workshop on the Semantic Publishing, SePublica Crete, Greece 28 May 2012.
- [3] Belhajjame K., Zhao J., Garijo D., Gamble M., Hettne K., Palma R., Mina E., Corcho O., Gómez-Pérez J. M., Bechhofer S., Klyne G., Goble C. “Using a suite of ontologies for preserving workflow-centric research objects”, Journal of Web Semantics: Science, Services and Agents on the World Wide Web Available online 11 February 2015 ISSN 1570-8268.

- [4] Palma R., Corcho O., Gómez-Pérez J. M., Mazurek, C. "ROHub - A Digital Library of Research Objects Supporting Scientists Towards Reproducible Science". In Semantic Publishing Challenge of Proc. Extended Semantic Web Conference (ESWC) Crete, Greece 25-29 May 2014